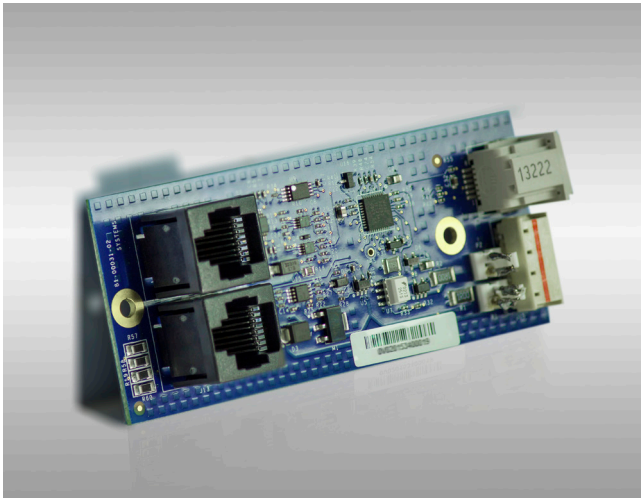


Issue 20170529 – May 2017

# SG-2G-EMB-RTSC4811



smartengine LED Gateway, Generation 2, embedded, one channel

- Combines 2 channels up to 68 W
- Connects to sensor pod

## GENERAL SPECIFICATIONS

<b>Brand</b> .....	smartengine
<b>Generation</b> .....	2
<b>Product Type</b> .....	Gateway
<b>Application</b> .....	Controls and dims a connected third-party LED fixture   Transmits sensor data
<b>Data Ports</b> .....	2
<b>Mount Type</b> .....	Ceiling
<b>Package Quantity</b> .....	1

## DIMENSIONS

<b>Depth</b> .....	106.68 mm   4.20 in
<b>Height</b> .....	30.48 mm   1.20 in
<b>Width</b> .....	76.20 mm   3.00 in
<b>Weight</b> .....	0.11 kg   0.25 lb

## MECHANICAL SPECIFICATIONS

<b>Engine Connector Interface</b> .....	RJ45
<b>Engine Connector Interface</b> .....	2 qty
<b>Fixture Connector Interface</b> .....	10-pin mini connector
<b>Material Type</b> .....	Plastic
<b>Opt. Engine Connector Interface</b> ...	18 AWG spring loaded terminal
<b>Opt. Engine Connector Interface</b> ..	6 qty
<b>Sensor Connector Interface</b> .....	RJ25
<b>Sensor Connector Interface</b> .....	1 qty

Issue 20170529 – May 2017

# SG-2G-EMB-RTSC4811

## ELECTRICAL SPECIFICATIONS

**ANSI/TIA Category** ..... 5e | 6 | 6A

**Power Consumption, sty., max.**..... 500 mW

## ENVIRONMENTAL SPECIFICATIONS

**Environmental Space**..... Indoor | Plenum

**Operating Humidity** ..... 10%-80%, non-condensing

**Operating Temperature** ..... 0°C to +50°C (+32°F to +122°F)

**Storage Humidity** ..... 5%-95%, non-condensing

**Storage Temperature** ..... -20°C to +60°C (-4°F to +140°F)

**Safety Standard**..... AS/NZS CISPR 22 | c-UL-us | CE | CEC Title 24-2008 | IEC 60950 | IEC 61000-4.5, Class 3 | UL 60950 | UL-us | US FCC Part 15, Class A

SG-2G-EMB-RTSC4811

## REGULATORY COMPLIANCE/CERTIFICATIONS

Agency	Classification
RoHS 2011/65/EU	Compliant

