

# Optimize space utilization

---

Many companies have little or no information about how employees, customers and other users utilize “space”. A visualization of the real-time occupancy, as well as the analysis of historical data are available through smartengine’s software solutions. Based on the collected data, both the current allocation and use of space and the planning of future requirements, can be optimized.



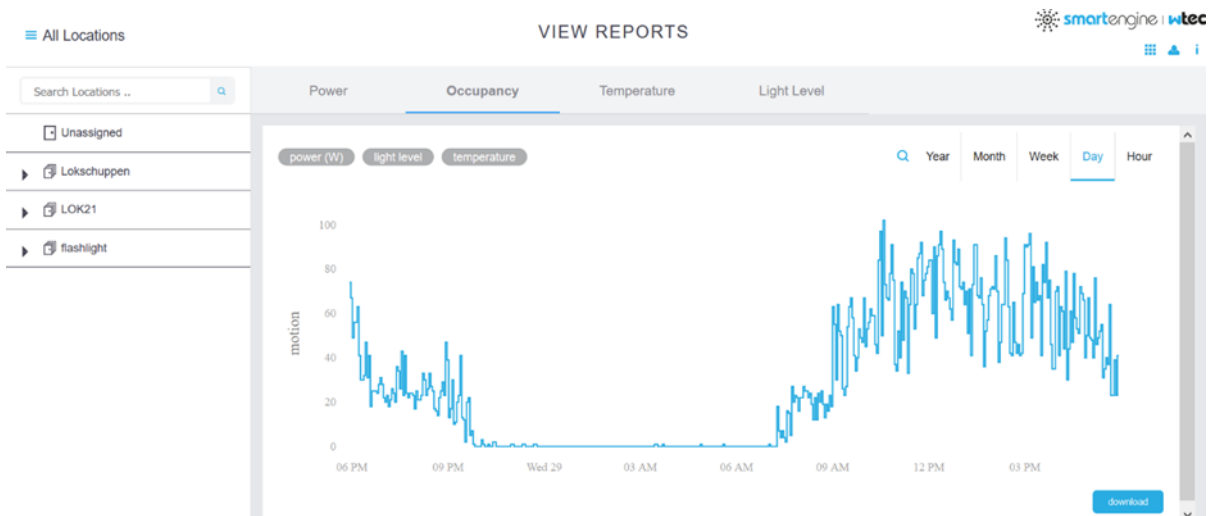
## **smartengine provides valuable data and insights into your space occupancy and utilization**

smartengine collects live data on various parameters and is able to provide insights into space utilization and occupancy. These insights are presented in metrics, floorplans and graphs and enable a deep-dive to deliver valuable insights:

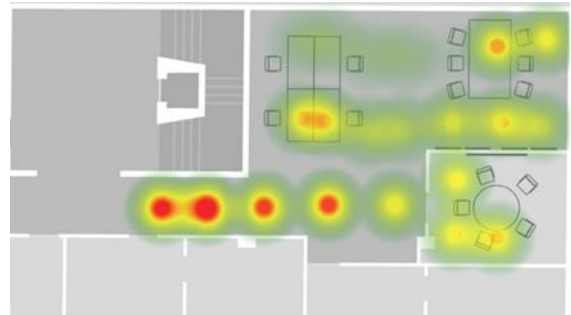
- Occupancy: are there free desks, meetings rooms or phone booths?
- What areas are being utilized and to what intensity?
- Utilization: how well was the capacity of a room or zone utilized?
- Future layouts and expansions based on data over time and trends
- Most and least used rooms/zones
- metrics by campus, building, floor, room, room type and time of the day
- clustering according to similar patterns

Combining occupancy data with other sources of Business Intelligence such as HR data and business KPIs will lead to valuable insights on the current situation and correlations. These insights will help you plan the future and optimize so you can provide the space your organization needs.

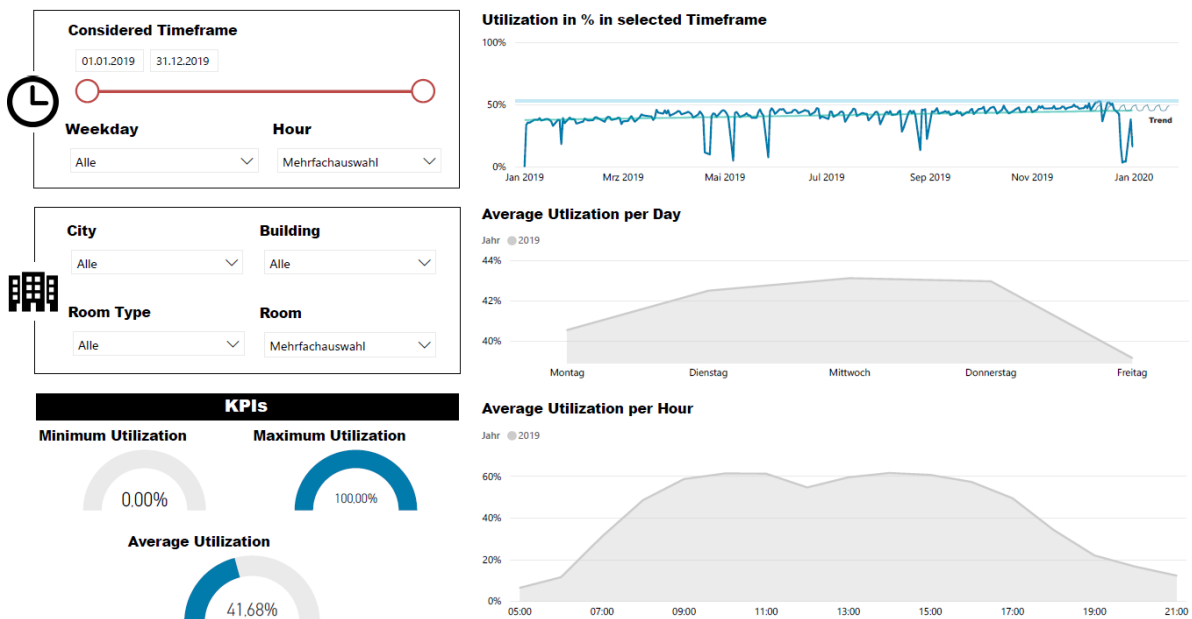
smartmanager, the UI and dashboard for smartengine, provides a logical tree of the building (or campus) from a level in the building to the room and even down to the single sensor. On each of these logical levels sensor data can be visualized per selected time frame and sent to other systems via our open API or BACnet/IP stack.



Visualization of floor-plan based heatmaps showing each individual sensor position is currently available in our end-user control Apps for iOS and Android. Via the open API a third party integration of the collected data is easily possible.



The collected data can be exported to other tools developed by wtec to create more detailed reports. See examples below:



**Considered Timeframe**

01.01.2019 31.12.2019

**Weekday** **Hour**

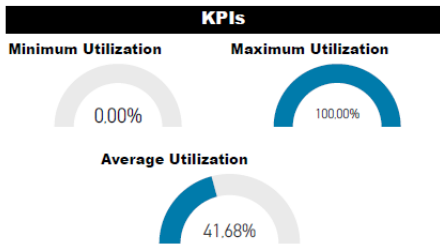
Alle Mehrfachauswahl

**City** **Building**

Alle Alle

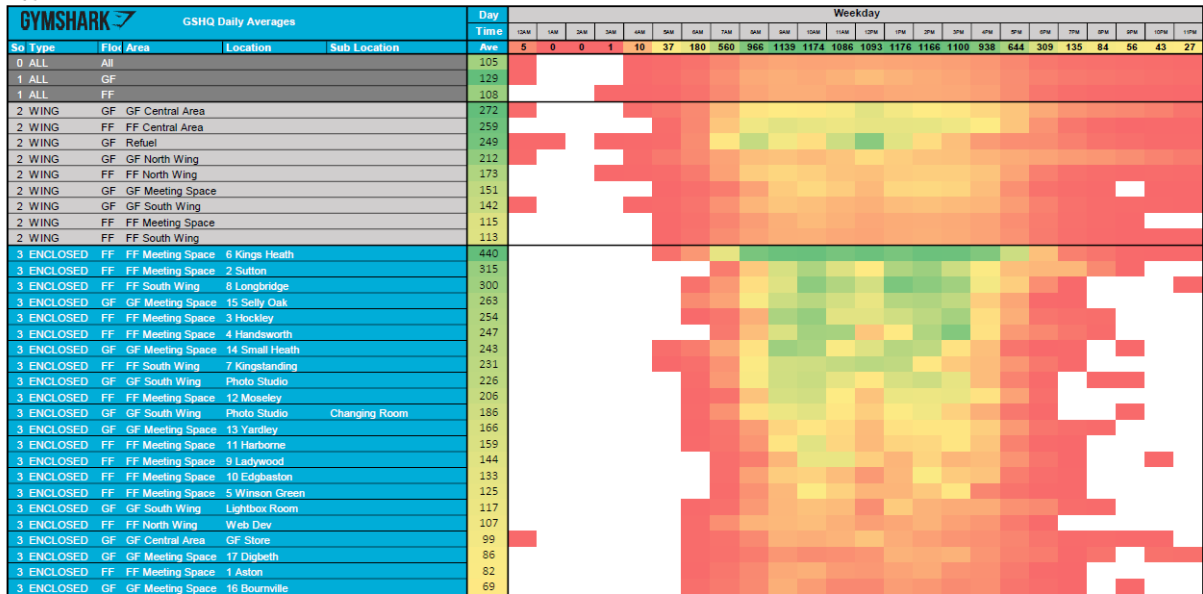
**Room Type** **Room**

Alle Mehrfachauswahl



TOP Rooms	Average Utilization
/First Floor	93,98 %
/Ground Floor/GF North Wing	92,76 %
/First Floor/FF North Wing	92,34 %
/Ground Floor	86,21 %
/Ground Floor/GF Central Area	81,83 %
/Ground Floor/GF South Wing	80,49 %
/Ground Floor/GF Central Area/GF Central Track	79,18 %
/Ground Floor/GF Central Area/GF Agile	78,87 %
/Ground Floor/GF Central Area/GF Tea Point	77,82 %
/Ground Floor/GF Central Area/Iceberg	77,59 %
/Ground Floor/GF North Wing/Cinema	77,13 %

FLOP Rooms	Average Utilization
/First Floor/FF South Wing/People/People Meeting Space	1,75 %
/Ground Floor/GF North Wing/IT Setup	2,35 %
/Ground Floor/GF South Wing/Test Lab	2,54 %
/First Floor/FF South Wing/FF South Walkway	3,39 %
/First Floor/FF South Wing/Tech	3,48 %
/First Floor/FF North Wing/Comms Room	3,63 %
/Ground Floor/GF North Wing/Ops	3,81 %
/Ground Floor/GF Meeting Space/Old Studio	3,87 %
/Unassigned	4,24 %
/Ground Floor/GF Meeting Space/Shirley	5,10 %
/Setup Location/161 Standard One	5,59 %



**wtec GmbH**

Dornbachstr. 1a  
61352 Bad Homburg  
Tel. +49 6172 995 98 0

**wtec Inc.**

2362 Qume Dr. Suite C  
95131 San Jose  
Tel. +1 408 824 9949

